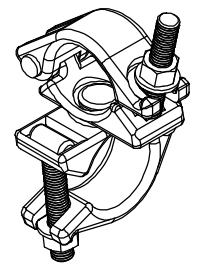
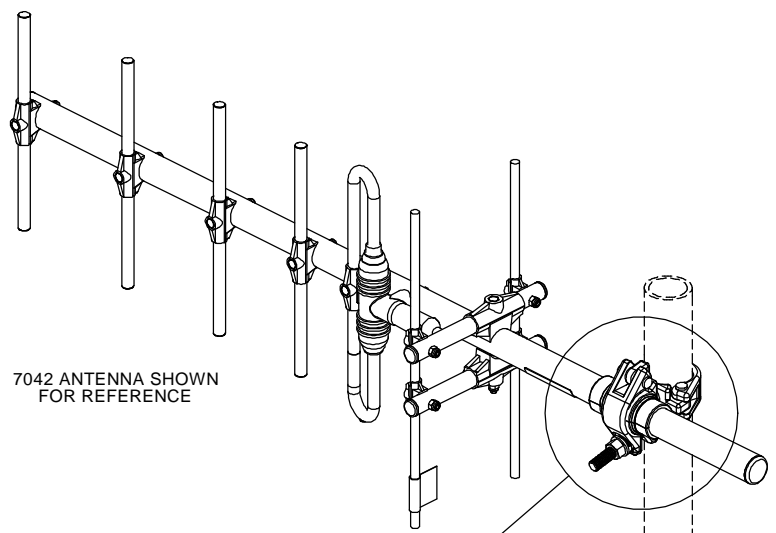
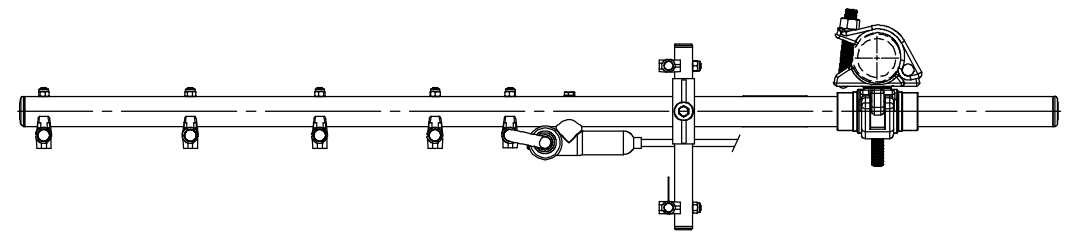


P/N 3201079/00
INCREASING SLEEVE (PAIR)
Ø32 - Ø48.3MM

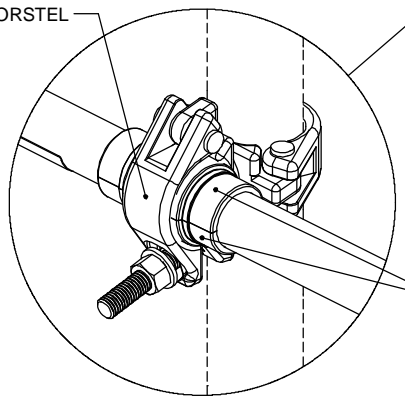


P/N 3202078/68
FIXED 90° NORSTEL

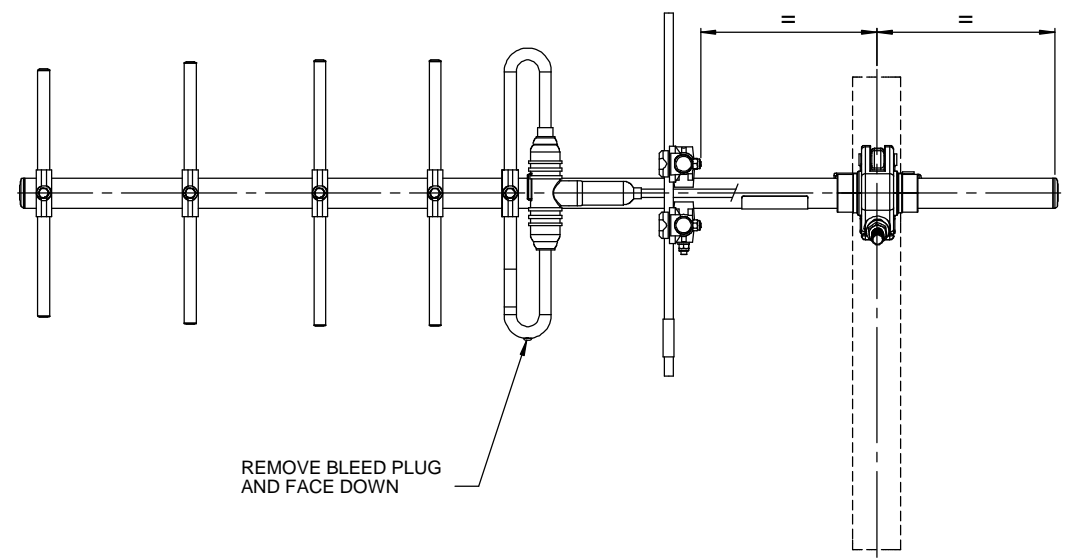


7042 ANTENNA SHOWN
FOR REFERENCE

FIXED 90° NORSTEL



INCREASING SLEEVES



REMOVE BLEED PLUG
AND FACE DOWN

NOTE:
REFER TO YAGI ANTENNA MOUNTING INSTRUCTIONS

TORQUE SETTING
M12 - 40 Nm

DETAIL U
SCALE 1 : 2

| | | | | | | | | | |
|---|--|---|--|--|--|---|--------------------|---------------------|--------------|
| SHEET 1 OF 1 | | TOLERANCES UNLESS OTHERWISE STATED TOLERANCES TO BE AS FOLLOWS :- | | ALL DIMENSIONS IN MILLIMETRES (mm) UNLESS OTHERWISE SPECIFIED | | MATERIAL - | | FINISH - | |
| <div>©</div> <div>THE COPYRIGHT OF THIS DOCUMENT IS RESERVED BY JAYBEAM LTD. IT IS ISSUED IN CONFIDENCE AND MUST NOT BE COPIED, REPRODUCED OR DISPLAYED TO A THIRD PARTY EITHER WHOLLY OR IN PART WITHOUT THE WRITTEN CONSENT OF JAYBEAM LTD.</div> | | NO PLACE DECIMAL - ±0.5mm 1 PLACE DECIMAL - ±0.25mm 2 PLACE DECIMAL - ±0.15mm HOLE CENTRES - ±0.25mm ANGLES - ±1.0° | | <div><div>Amphenol</div><div>ANTENNA SOLUTIONS</div><div>Amphenol Antenna Solutions, Rutherford Drive, Park Farm South, Wellingborough, Northamptonshire, NN8 8AX, England Telephone: (01933) 408 408 International: +44 1933 408 408 Fax: (01933) 408 403</div></div> | | TITLE GENERAL INSTALLATION OF YAGI ANTENNA Ø1 1/4" BOOM SIZE TO SCAFF | | | |
| | | | | | | DRAWN CS | DATE 23/05/2013 | REFERENCE Clamps | SCALE 1:4 |
| | | | | | | ENG. APP'D - | QA APP'D - | 9255441 | |

Mounting Instructions

Yagi-Uda Antennas

General Mounting Instructions

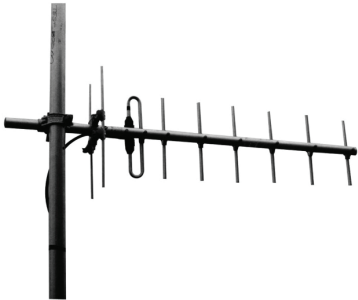


Fig. 1
Typical Vertical Polarisation Installation

- 1** Mount the antenna in an unobstructed location using a suitable clamp. Assorted clamps are available from Amphenol Antenna Solutions.
- 2** Manoeuvre the antenna to the desired direction and into the correct polarisation.
- 3** If the antenna is to be operated in vertical polarisation (VP) and the antenna dipole is of the tube type, the live-side of the dipole, to which a black plastic ring is attached, must be uppermost. The small black bung in the hole of the tube at the lower extremity must be removed (see Fig.1): 'live-side' uppermost – IMPORTANT for phasing multiple antennas.
- 4** Carefully clamp the antenna down-lead cable to the boom (using cable-ties for example), and avoid kinks or bend radiuses that are too tight for the type of cable. Run it down the mounting structure. Drip loops can be fashioned at the discretion of the installer.
- 5** Connect and seal the down-lead connector to the feeder cable mating connector in the approved manner (different operators and installers have different standards to which they work). Some form of water-proofing will usually be required, e.g. self-amalgamating tape, Denso or other.

There is no maintenance required on these passive units, but a visual inspection every two years is good practice and should help to identify any deterioration to such things as the antenna, cable, bracketry or mounting structure.